



**Scan to Donate**

**For Monetary Donations**

- Visit [ourncm.org/donate](http://ourncm.org/donate)
- Mail checks to address below

**Mailing Address:**

P.O. Box 1489 • Norcross, GA 30091

**Donation Hours:**

Monday - Friday: 9am - 4pm  
 Tuesday: 9am - 7pm  
 Closed on Saturday & Sunday

**Website:** [ourncm.org](http://ourncm.org)

**Email:** [info@ourncm.org](mailto:info@ourncm.org)

**Phone** 770.263.0013

**Fax** 770.263.0998

**2024 Member Churches**

- Campus Church of Christ
- Central Baptist Church
- Christ Church Episcopal Norcross
- Christ the King Lutheran
- Corners Church
- Generations Church
- Grace Atlanta Bible Church
- Johns Creek Baptist Church
- Johns Creek United Methodist
- Mary Our Queen
- Mt. Carmel United Methodist
- Norcross 1st Global Methodist
- Norcross Presbyterian
- One Heart Church
- Parkway Baptist Church
- Peachtree Corners Baptist Church
- Peachtree Corners Presbyterian Church
- Perimeter Church
- Simpsonwood United Methodist
- St. Barnabas Anglican Church
- The Lord's House Community Church
- Victory Church

**Corporate Partners**

- Andersen Tate & Carr
- Associated Credit Union
- Atlanta Gas Light
- Atlanta Tech Park
- Bardi Home Services
- Cultivation Brewing
- Foresite Group
- Highgrove Partners
- Ideal Building Solutions
- Jim Ellis Employee Charity
- Mahaffey Pickens Tucker LLP
- Mingledorff's
- Napa Auto Parts
- New Urban Development
- Ole Mexican Foods
- Porter Steel
- Soliant
- Sourced Atlanta
- Suzanna's Kitchen
- Tandem Bank
- The Forum Peachtree Corners
- Thompson O'Brien Kappler & Nasuti, PC
- Zurn Plumbing



ourncm



ourncm



neighborhood-cooperative-ministries

500 Pinnacle Court • Suite 510  
 Norcross, GA 30071  
 770.263.0013



**2024**



**Annual Report**

**Letter From Board of Directors President**

2024 was a year in which we saw the needs of the community increase significantly. Thanks to the continued support of our donors, and the tireless efforts of our volunteers and staff, NCM was able to step up to the challenge once again.

We served over 36,000 individuals in 2024. This represents a 30% increase over the prior year! Monetary donations were actually down in 2024, so our investments in expanding our food program and our clothes closet played a huge role in helping us meet the expanding needs of our clients. Our new 450 sq ft walk-in refrigerator/freezer came online early in 2024. Thanks to our great food partners and volunteers, we were able to distribute over 498,000 pounds of food during the year. This is an increase of over 46% from 2023, and it went a long way in helping our clients deal with the continued rising costs of food. 2024 was also the first time our expanded clothes closet was operational for a full year, and this too provided great support. We distributed over 58,000 pieces of clothing - up over 23% from 2023.

Beyond just focusing on statistics, one of our primary goals for 2024 was to place even more emphasis on helping our clients move from crisis to lasting stability. As you can appreciate, this is not a quick or easy task, and it is one that we will continue to invest even more heavily in with the year ahead.

Now perhaps more than ever, our community needs NCM! To meet these needs, NCM needs you! We are grateful for all your support in 2024, and we need you more than ever in 2025. It would be hugely impactful if you can help us start strong in 2025 by donating and volunteering early in the year.

With gratitude,

Les Harper  
 Board President

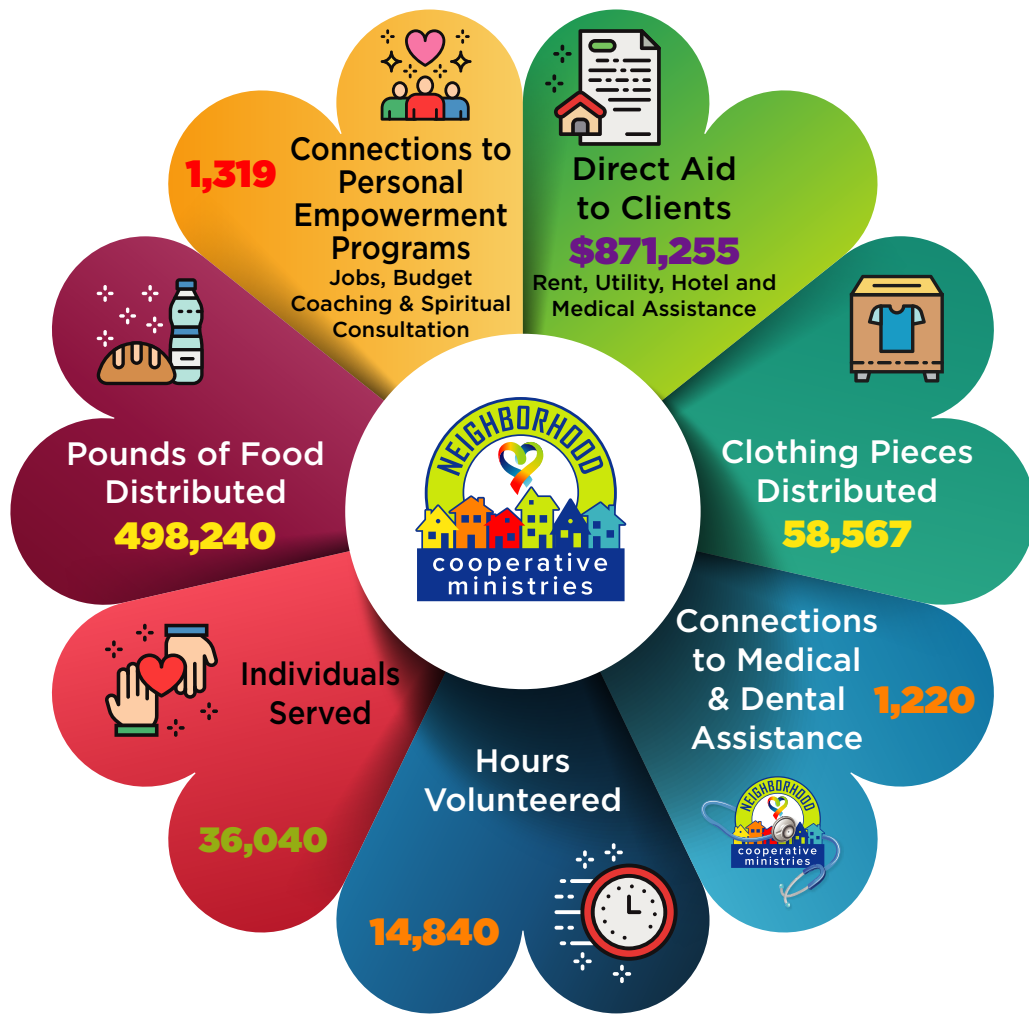
Ryan Jones  
 Executive Director

**SAVE THE DATE**  
**Celebration 2025**  
**Thursday**  
**Sept. 25, 2025**





# Thank You For Your Support!



Updated December 31, 2024

## 2024 Income:

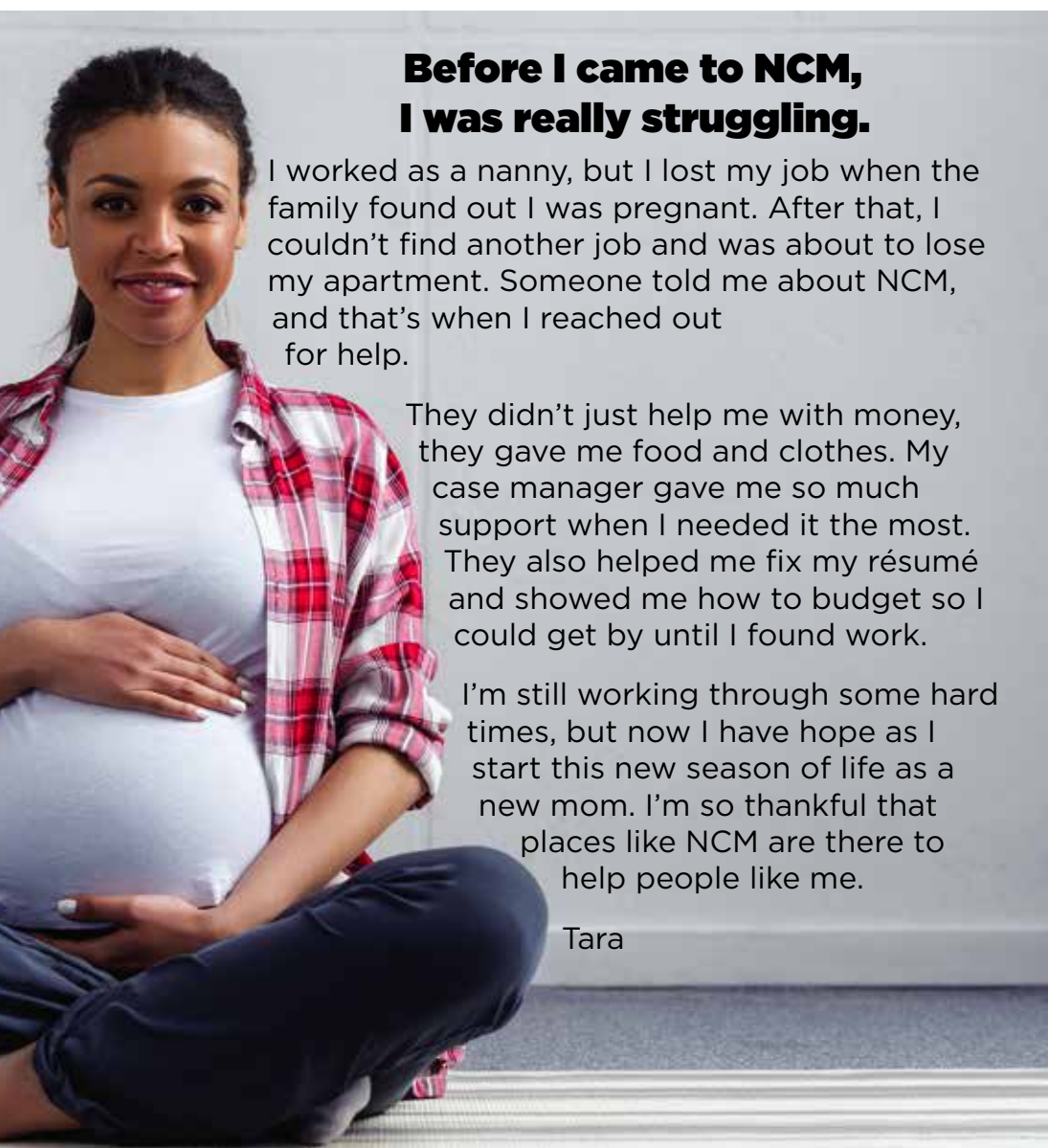
**\$1,502,840** Monetary Donations

**\$673,884** In-Kind / Donated Goods

**\$2,176,724** Total Contributions



- 15% Churches
- 10% Corporations
- 10% Foundations
- 3% Government Programs
- 62% Individuals



### Before I came to NCM, I was really struggling.

I worked as a nanny, but I lost my job when the family found out I was pregnant. After that, I couldn't find another job and was about to lose my apartment. Someone told me about NCM, and that's when I reached out for help.

They didn't just help me with money, they gave me food and clothes. My case manager gave me so much support when I needed it the most. They also helped me fix my résumé and showed me how to budget so I could get by until I found work.

I'm still working through some hard times, but now I have hope as I start this new season of life as a new mom. I'm so thankful that places like NCM are there to help people like me.

Tara

### Make Stability Possible Every Month

Have you considered being a recurring donor? Recurring donations allow us to provide consistent, reliable support to families facing housing instability. They help us plan ahead, respond quickly to emergencies, and offer the long-term resources families need to stay in their homes and thrive. Your monthly gift creates a foundation of stability, ensuring we can continue this vital work. Together, we can make a lasting impact.

