

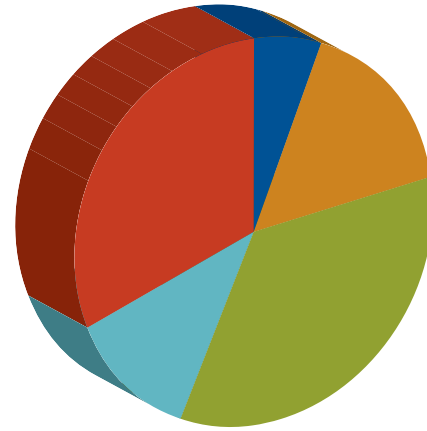
2021 Member Churches

12 Stone Church
 Campus Church of Christ
 Central Baptist Church
 Christ Church Episcopal
 Christ The King Lutheran
 Community Church of Christ
 Corners Church of Christ
 Generations Church
 Grace Atlanta Bible Church
 Johns Creek Baptist
 Johns Creek United Methodist
 Kingdom Now Ministries
 Lake Berkeley Chapel
 Mary Our Queen
 Mt. Carmel United Methodist
 Norcross First United Methodist
 Norcross Presbyterian
 One Heart Church
 Parkway Baptist
 Peachtree Corners Baptist
 Peachtree Corners Christian
 Peachtree Corners Presbyterian
 Perimeter Church
 Simpsonwood United Methodist
 St. Barnabas Anglican Church
 Sugarloaf United Methodist
 Victory World Church

Corporate Partners

Suzanna's Kitchen
 The Piedmont Bank
 Associated Credit Union
 Mingledorff's
 Titan Asset Management
 Jim Ellis
 Insight Sourcing Group
 Pacific Diversified Services
 Mahaffey Pickens Tucker
 Georgia Center For Opportunity
 Image Manufacturing Group
 Smith + Howard
 LightsandBatteries.com
 Brightree
 Highgrove Partners
 Durable Industrial Finishing
 Skyline Rentals
 Bardi Heating & Air Conditioning
 Soliant Health
 Georgia Banking Company
 First Citizens Bank
 Rural Sourcing
 Quantum National Bank
 Anderson, Tate & Carr, P.C.
 Garrard Construction Group
 2B Whole LLC
 Anago Cleaning Systems
 Molly Maids of Norcross, Lawrenceville, Lilburn
 C.Thompson & Associates

2021 Income: \$2,750,347

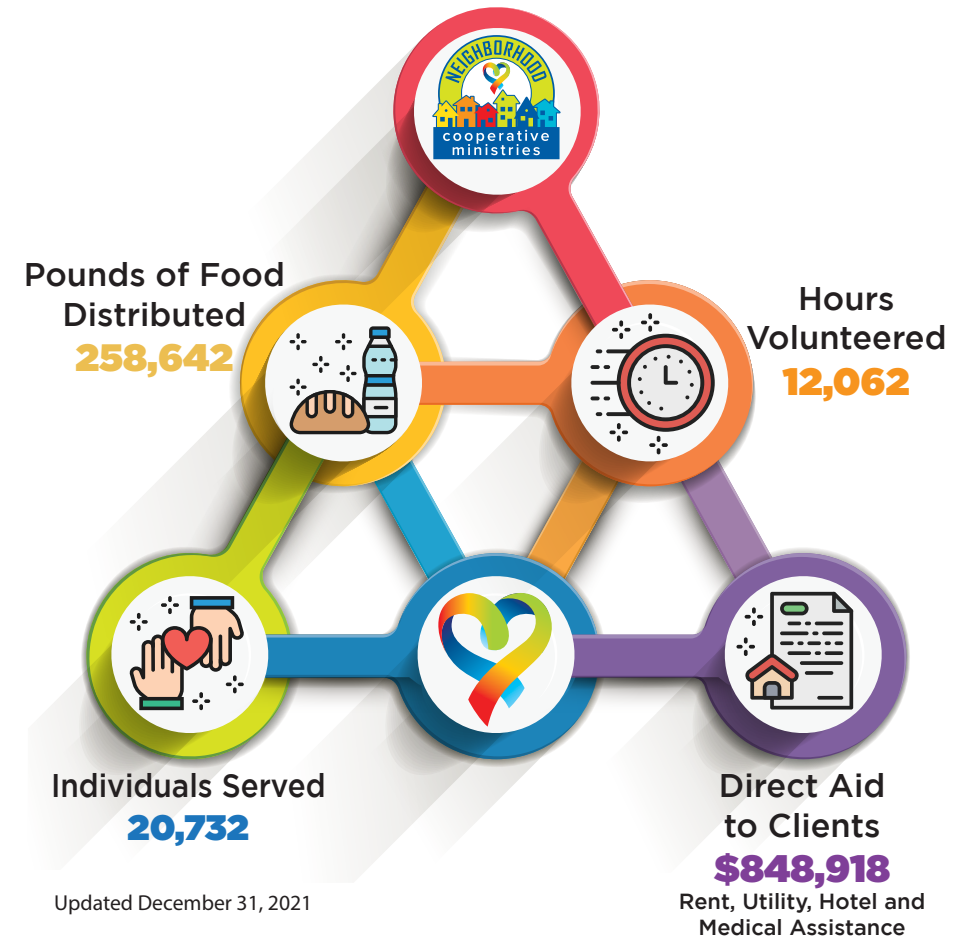


- 6% Churches
- 16% Corporations
- 33% Foundations
- 14% Government Programs
- 30% Individuals



Board of Directors

Susan Bardi
 Gary Brace
 Darcy Copeland
 David Copeland
 Mike Dickinson
 Steve Dorough
 Tom Fishburne
 Prudence Franklin
 Weare Gratwick
 Yolanda Henderson
 Elizabeth Gross
 Lynette Howard
 Tye Hanna
 Melvin Melton
 Clara Richardson-Olguin
 Ken Shumard
 Beth Strickland
 Lee Tucker
 Gary Walderich



2021

